

## REGIONAL DISTRICT OF CENTRAL KOOTENAY

# Bylaw No. 2665

---

A Bylaw to convert a continued service within a portion of Electoral Area A (Sanca Park) for the purpose of providing a water supply and distribution system.

---

WHEREAS the Board of the Regional District of Central Kootenay established the Sanca Park Specified Service Area with the adoption of specified area bylaw Sanca Park Water Supply and Distribution System Specified Area Establishment Bylaw No. 268, 1979, within a defined portion of Area A to provide water supply and distribution system services;

AND WHEREAS Sanca Park Water Supply and Distribution System Specified Area Establishment Bylaw No. 268, 1979 is a continued service which the Regional District may, by bylaw, convert to a local service under the provisions of the *Local Government Act*;

AND WHEREAS pursuant of the *Local Government Act* participating area approval has been obtained by consent from the Electoral Area A Director.

NOW THEREFORE the Board of the Regional District of Central Kootenay, in open meeting assembled, HEREBY ENACTS as follows:

- 1 The Sanca Park Specified Area Service, as established by specified area bylaw Sanca Park Water Supply and Distribution System Specified Area Establishment Bylaw No. 268, 1979, is hereby converted and established as a local service authorized to provide water supply and distribution system services to a portion of Electoral Area A.
- 2 The converted and established service shall be known as the Sanca Park Water Supply and Distribution System Service.
- 3 The sole participant to the service established under Section 1 of this bylaw shall be Electoral Area A.
- 4 The boundary of the service area established by this bylaw includes a defined portion of Electoral Area A, described in Schedule A of this bylaw, and shall be known as the Sanca Park Water Supply and Distribution System Service Area.
- 5 Pursuant of the *Local Government Act*, the annual cost of providing the service shall be recovered by one or more of the following:
  - (a) Property value taxes;

- (b) Fees and charges;
- (c) Parcel Tax Roll;
- (d) Revenue raised by other means; or
- (e) Revenue received by way of the agreement, enterprise, gift, grant or otherwise.

6 The maximum amount to be requisitioned annually for this service shall not exceed the greater of \$18,638.50 or \$0.7033 per \$1,000 of the net taxable actual value of land and improvements in the service area.

7 This Bylaw may be cited as **“Sanca Park Water Supply and Distribution System Service Establishment Bylaw No. 2665, 2019.”**

READ A FIRST TIME this	21 <sup>st</sup>	day of	March, 2019
READ A SECOND TIME this	21 <sup>st</sup>	day of	March, 2019
READ A THIRD TIME this	12 <sup>th</sup>	day of	December, 2024.
REREAD A THIRD TIME this	16 <sup>th</sup>	day of	October, 2025

I hereby certify that this is a true and correct copy of the **“Sanca Park Water Supply and Distribution System Service Establishment Bylaw No. 2665, 2019”** as read a third time by the Regional District of Central Kootenay Board on the 16<sup>th</sup> day of October, 2025.



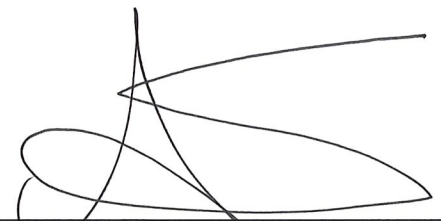

---

Angela Lund, Deputy Corporate Officer  
For Mike Morrison, Corporate Officer

ASSENT RECEIVED as per the *Local Government Act – consent of rural.*


APPROVE by the Inspector of Municipalities on the 21<sup>st</sup> day of November, 2025.

ADOPTED this 22<sup>nd</sup> day of January, 2026



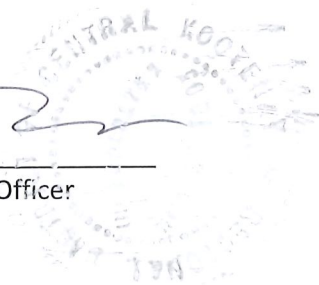

---

Aimee Watson, Board Chair

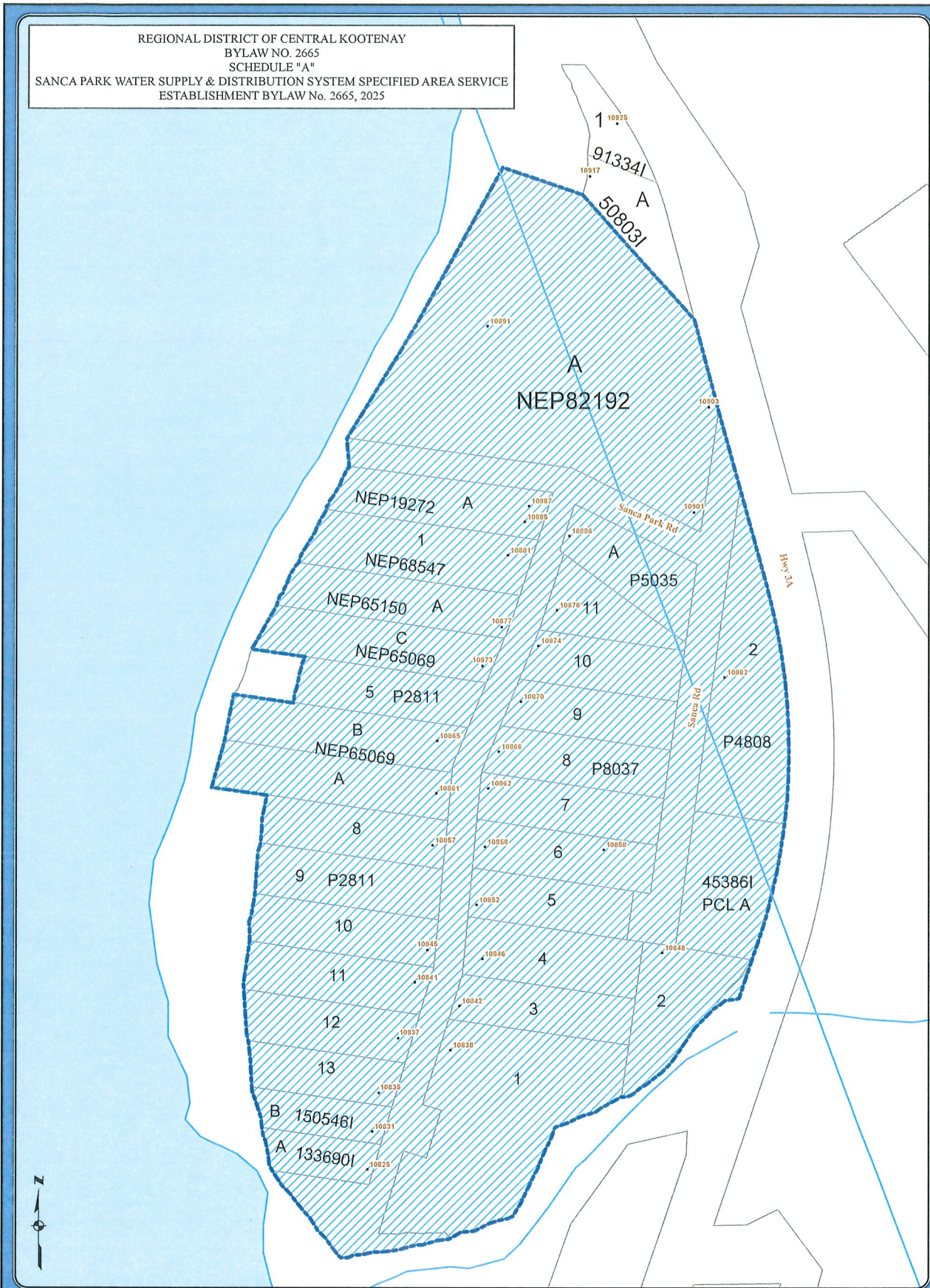




---

Mike Morrison, Corporate Officer



REGIONAL DISTRICT OF CENTRAL KOOTENAY  
 BYLAW NO. 2665  
 SCHEDULE "A"  
 SANCA PARK WATER SUPPLY & DISTRIBUTION SYSTEM SPECIFIED AREA SERVICE  
 ESTABLISHMENT BYLAW No. 2665, 2025





**REGIONAL DISTRICT OF CENTRAL KOOTENAY**

The mapping information shown are approximate representations and should only be used for reference purposes. The Regional District of Central Kootenay is not responsible for any errors or omissions on this map.

Box 590, 202 Lakeside Drive, Nelson, BC V1L 5R4  
 Phone: (250) 352-6665 Toll-Free 1-800-268-7325 (BC)  
 Fax: (250) 352-9300 Internet: www.rddk.bc.ca

**SCHEDULE A - BYLAW 2665**

 Water System Boundary

**Map Scale**  
 0 25 50 100  
 Meters

Map Projection: UTM Zone 11 Map Datum: NAD83  
 Date Plotted: April 30, 2025

**Data Sources**  
 The following sources of data are updated as changes occur:  
 Cadastral Lot - Surveyed lots/parcels of land;  
 Sources: Crown Land Registry Services and RDCK  
 District Lot: Source: Crown Land Registry Services; Integrated Cadastral Initiative (ICI) and RDCK  
 TRIM Data - Planimetry: Unsurveyed Roads, Contours: Source: Ministry of Water, Land & Air Protection ALR - Agricultural Land Reserve; Source: BC Land Reserve Commission  
 Zoning - Rural Land Use, Land Use, Zoning Bylaws, where bylaws are in place. Source: RDCK  
 Roads - Road centeline compiled 2003. Source: RDCK

