



Media Release

Date: May 5, 2023

For immediate release

7:00 PM

Evacuation Alert issued for Duhamel Creek in Electoral Area F

Nelson, BC: The Regional District of Central Kootenay (RDCK) Emergency Operations Centre (EOC) has issued an Evacuation Alert for Duhamel Creek in Electoral Area F. See map of the Evacuation Alert area below.

[Evacuation Alert – including address points](#)

Environment Canada is forecasting heavy rain with the possibility of thunderstorms tonight and the BC River Forecast Centre has the entire RDCK under flood watch. The rainfall forecast may pose a threat to the structural integrity of the Duhamel Creek flood protection works (diking structure). Flooding of areas adjacent to affected waterbodies may occur.

At this time residents or visitors within the area are not required to evacuate, however the RDCK advises people to remain vigilant and be prepared to leave the area at a moment's notice. It is recommended to prepare an emergency kit and ensure preparedness, including moving pets and livestock to a safe area, in the event the situation worsens and an Evacuation Order is enforced. Part of your plan should include where you can go if evacuated.

The RDCK warns everyone to stay away from the edges of watercourses and report any erosion or flooding to the [Provincial Emergency Coordinator Centre](#) at 1.800.663.3456

Updates or changes to the Evacuation Alert will be provided via the [RDCK website](#), [Facebook](#) and [Twitter](#) as more information becomes available. For details about evacuation and emergency preparedness, along with other resources, please visit www.rdck.ca/eocinfo. The RDCK EOC public inquiry line is 250.352.7701.

What residents can do to be prepared:

- Sandbags and sand are available for residents at any of the locations listed on the RDCK website: www.rdck.ca/befloodprepared
- If you have livestock or large animals, now is the time to consider moving them.
- If you are not physically able to evacuate yourself, contact the EOC public inquiry line at 250.352.7701

For more emergency about evacuations and emergency preparedness, along with other resources:

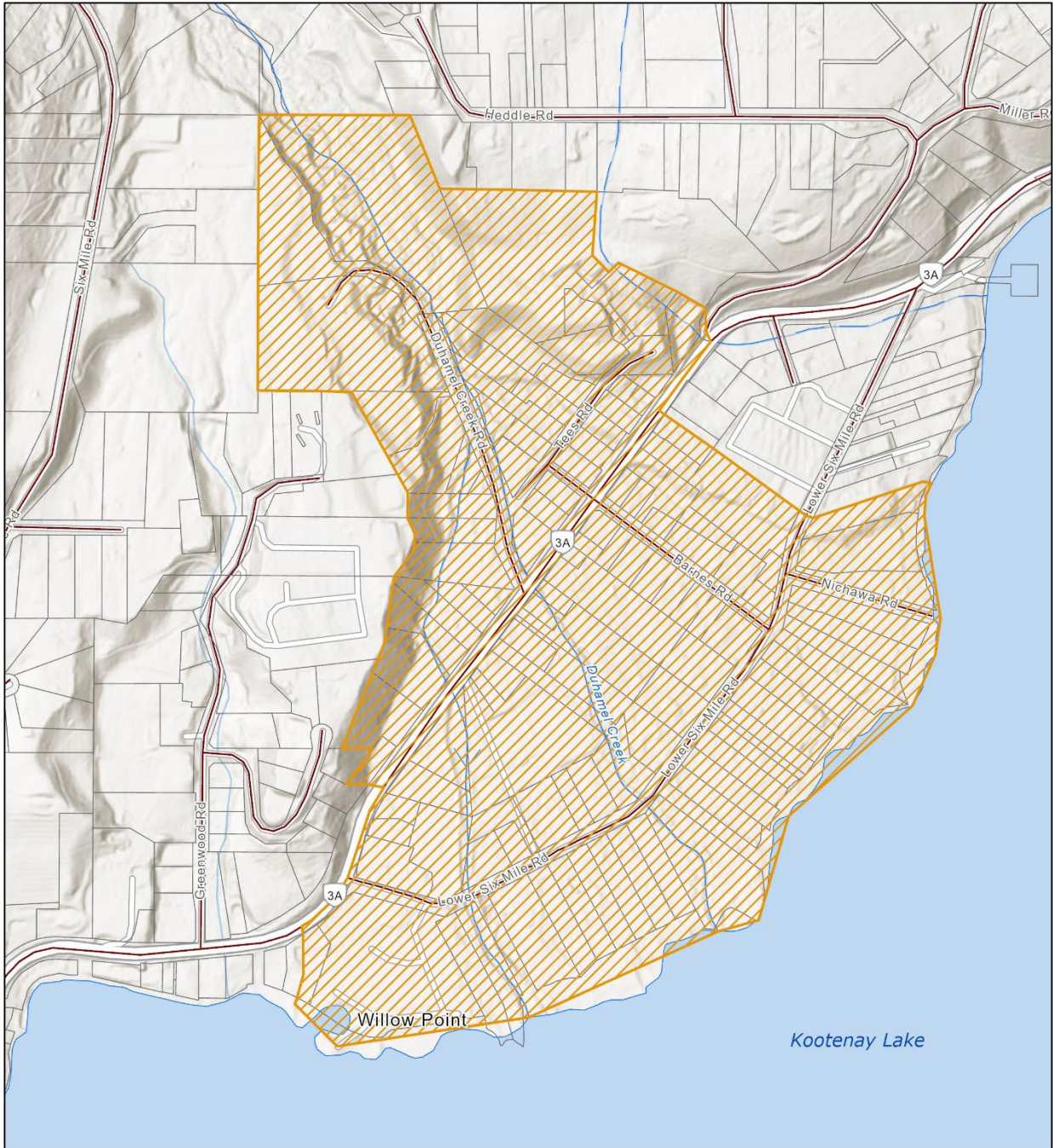
- [Current RDCK Evacuation Alerts, Orders and Rescinds](#) or call 250.352.7701
- Report flooding or any new hazards to the 24-hour toll-free provincial emergency number at 1.800.663.3456.
- [Sign up for RDCK Emergency Notification System to receive notifications](#)
- [RDCK web map](#)
- Follow the [BC River Forecast Centre](#) for flood warning and advisories
- [Public weather alerts for BC from Environment Canada](#)
- [Fortis BC Outage Map](#) or call 1.866.436.7847
- [BC Hydro outage map](#) or call 1.800.224.9376
- [Nelson Hydro](#) 1.877.324.9376
- [Drive BC](#) for highway closures and road conditions
- [Yellowhead Road and Bridge \(YRB\)](#) 1.888.630.1420
- [Prepared BC](#)

Incorporated in 1965, the Regional District of Central Kootenay (RDCK) is a local government that serves 60,000 residents in 11 electoral areas and nine member municipalities. The RDCK provides more than 160 services, including community facilities, fire protection and emergency services, grants, planning and land use, regional parks, resource recovery and handling, transit, water services and much more. For more information about the RDCK, visit www.rdck.ca.

-30-

For media enquiries:

EOC Information Officer
Regional District of Central Kootenay
Tel: 250.352-7701
Email: eocinfo@rdck.bc.ca



**REGIONAL DISTRICT OF
CENTRAL KOOTENAY
EMERGENCY
OPERATIONS CENTRE**

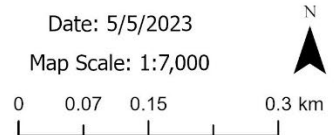
EOC Phone: 250-352-7701 or 1-866-522-7701
 Current Emergency Information:
rdck.ca/EOCinfo
 Register to receive emergency notifications:
rdck.ca/notifications
 To report a flood, landslide, spill or other hazards:
 1-800-663-3456

Duhamel Creek

-  Evacuation Alert
-  Streets
-  Legal Parcels
-  Creeks and Waterways
-  Lakes and Rivers

Date: 5/5/2023

Map Scale: 1:7,000



The mapping information shown are approximate representations and should only be used for reference purposes. The Regional District of Central Kootenay is not responsible for any errors or omissions on this map.