



REGIONAL DISTRICT OF CENTRAL KOOTENAY

MEDIA RELEASE

August 14, 2018
For immediate release

Evacuation Alert issued for area south of Renata Wildfire activity south of Renata Creek and east of Dog Creek

Nelson, BC: The Regional District of Central Kootenay (RDCK) has issued an Evacuation Alert for nine addresses located south of Renata on Lower Arrow Lake due to wildfires. A map of the alert area follows, or it can be found on the RDCK website [here](#).

There are three fires currently active in the area, all of which were discovered on Saturday, August 11:

- East of Dog Creek (N52497) – approximately 11 hectares
- South of Renata Creek (N52549) – approximately 72 hectares
- South of Renata Creek 2 (N52550) – approximately 2 hectares

“The Southeast Fire Centre has requested an Evacuation Alert as a precaution to protect people and property in the area,” said Andrew Bellerby, Director of the RDCK Emergency Operations Centre (EOC) and Regional Fire Chief. “If you are affected by the alert, please take the time now to prepare to evacuate yourself and your family should an evacuation be required.”

Under an Evacuation Alert, residents and visitors should be prepared to evacuate at a moment’s notice. It is recommended to prepare an emergency kit and ensure preparedness in the event that the situation worsens, and an Evacuation Order is enforced.

Updates will be provided via the RDCK website, Facebook and Twitter as more information becomes available.

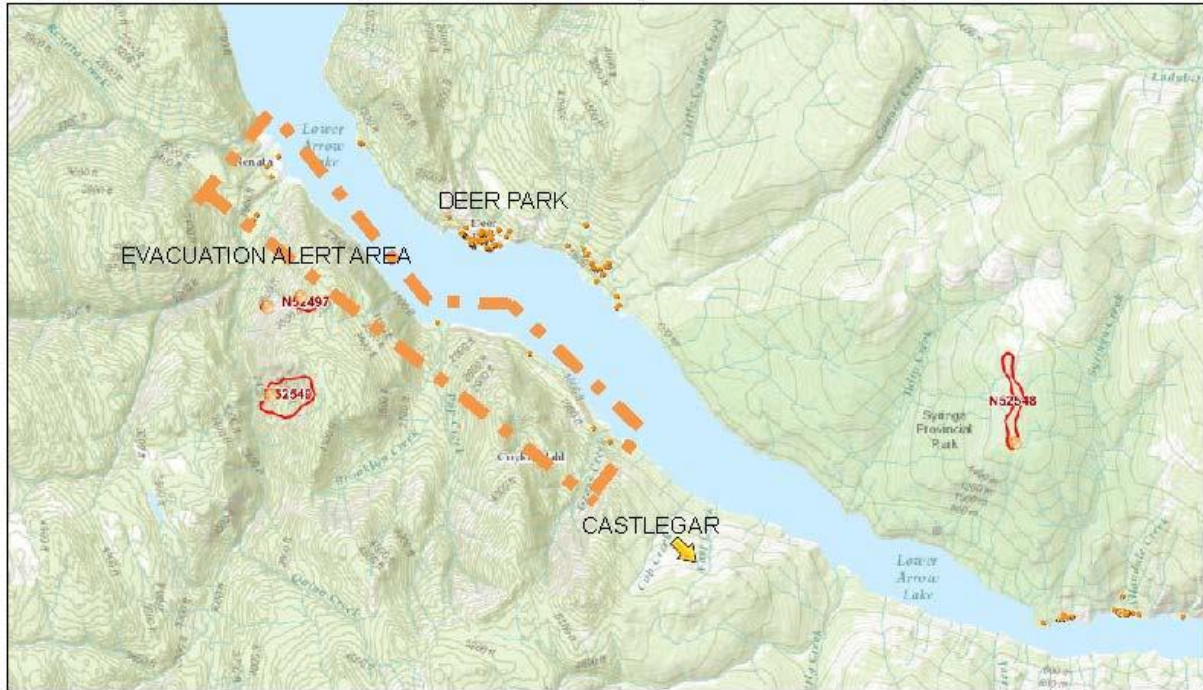
For more information:

- Current RDCK Evacuation Alerts, Orders and Rescinds: <https://rdck.ca/EN/main/services/emergency-management/evacuation-order-and-alert-page.html> or call 250-352-7701 / 1-866-522-7701.
- Sign up for RDCK Emergency Notification System to receive notification of Evacuation Orders. Go to www.rdck.ca and select “Emergency Alerts” from the home page, or go to the notification system sign-up page at <https://rdckemergency.connectrocket.com>.
- BC Wildfire – Interactive Map of Current Fires: <http://governmentofbc.maps.arcgis.com/apps/MapSeries/index.html?appid=ef6f11c8c36b42c29e103f65dbcd7538>
- Public weather alerts for BC from Environment Canada: https://weather.gc.ca/warnings/index_e.html?prov=bc

.../2

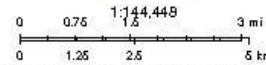
- Highway closures and conditions from DriveBC: <http://www.drivebc.ca/>
- For the BC Air Quality Health Index: <http://www.env.gov.bc.ca/epd/bcairquality/readings/aqhi-table.xml>
- For tips about living with smoky skies and wildfires from the Interior Health Authority: <https://www.interiorhealth.ca/YourEnvironment/Emergency/MajorEvents/Pages/default.aspx>
- Emergency preparedness information and tips from the Prepared BC website: <https://www2.gov.bc.ca/gov/content/safety/emergency-preparedness-response-recovery/preparedbc>

Renata creek/ Dog creek fires



8/14/2018, 5:23:38 PM

Override 1	Evacuation Areas	Evacuation Rescinded	Fire of -xxx
Override 1	Evacuation Alert	Deactivated	Fire
Civil Address - Small Scale	Evacuation Order	RDCK Electoral Areas	Fire Locations - Current



Source: Esri, HERE, Garmin, Intermap, increment P Corp., GEBCO, USGS, FAO, NPS, NRCAN, GEBCO, IGN, Esri, Swisstopo, Esri, Japan, METI, Esri, China (Beijing), Swisstopo, Esri, OpenStreetMap contributors, and the GIS User Community

RDCK: GIS Department
Bureau of Land Management, Province of British Columbia, Esri, Canada, Esri, HERE, Garmin, USGS, NGA, EPA, USGS, NPS, ADFG, NRCAN

For further information, please contact:

EOC Information Officer
 Regional District of Central Kootenay
 Tel: 250-352-7701 | Cell: 250-354-3476
 Email: eocinfo@rdck.bc.ca